

Trans-inductor Voltage Regulator (TLVR) inductor

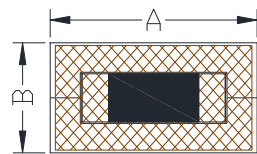


PART NUMBERING SYSTEM

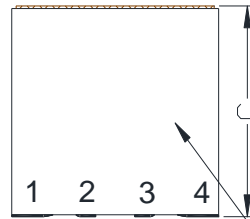
SBP	110511Q	—	R44M	—	LF
TYPE	DIMENSIONS		INDUCTANCE		LEAD FREE

SHAPES AND DIMENSIONS

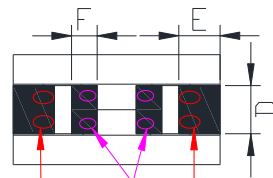
UNIT : mm



TOP VIEW



FRONT VIEW MARKING

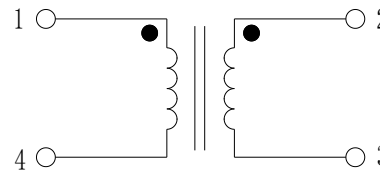
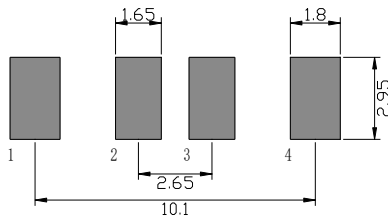


BOTTOM VIEW

A=11.8 ± 0.5 B=5.7 ± 0.5 C=11.0 ± 0.3 D=2.45 ± 0.3 E=2.1 Typ. F=1.05 Typ.

RECOMMENDED PATTERNS

UNIT : mm



Key Features:

- Withstanding Current: Supports up to 125A.
- Application: Ideal for servers, power switch hubs, and more.
- Compatibility: Cross-compatible with products from EATON, DELTA, PULSE, etc.
- Next-Generation Prototypes: New generation TLVR application prototypes available.
- Frequency Range : 300KHz to 2MHz.

Trans-inductor Voltage Regulator (TLVR) inductor

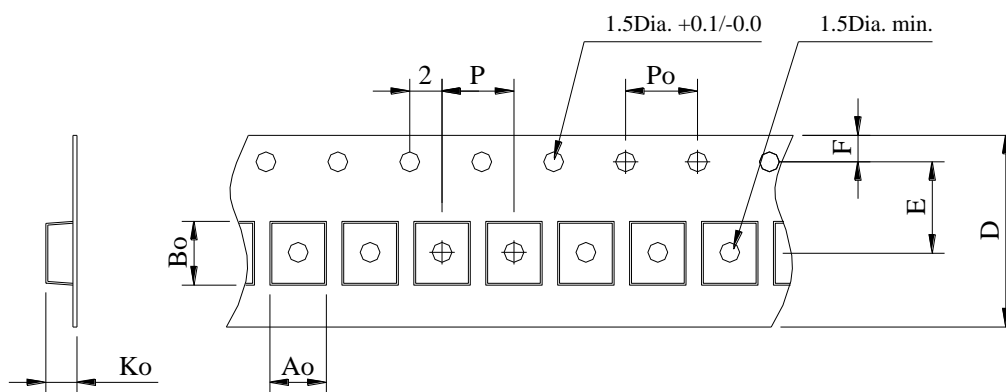


SPECIFICATION TABLE

PART NUMBER	INDUCTANCE (uH)	DCR (mΩ) Typ (S) / (P)	I rms (A) (S) / (P)	I sat (peak) Amps @25°C
SBP110511Q-R07L-LF	0.07±15%	0.37 / 0.125	45 / 77	125
SBP110511Q-R105L-LF	0.105±15%	0.37 / 0.125	45 / 77	125
SBP110511Q-R12L-LF	0.12±15%	0.37 / 0.125	45 / 77	102
SBP110511Q-R15L-LF	0.15±15%	0.37 / 0.125	45 / 77	84
SBP110511Q-R17L-LF	0.17±15%	0.37 / 0.125	45 / 77	70

- Isat: DC current at which the inductance drops 30% (typ.) from its value without current.
- Irms: Average current for 40°C temperature rise from 25°C ambient.

PACKAGING SPECIFICATION



STYLE	Q'TY (PCS)	DIMENSIONS (m/m)							
		A_o	B_o	K_o	P	P_o	D	$E\pm0.1$	$F\pm0.1$
13~16	350	6.25 ± 0.1	12.2 ± 0.1	11.2 ± 0.1	16.0 ± 0.1	4	24.0 ± 0.3	11.5	1.75

Inner Box : 700pcs

Carton Qty : 1400pcs