



Square Air Core Inductors - SS2628-SS3328 SERIES



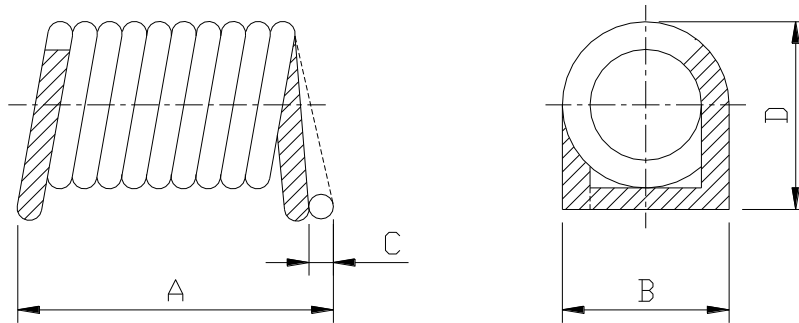
FEATURES

- SMD type air core inductor.
- Tape / Reel packaging available for auto-insertion.
- Extremely high Q factors.
- Tight inductance tolerances

APPLICATIONS

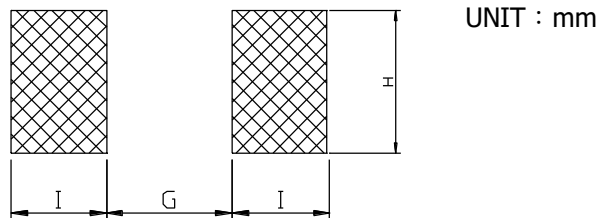
- RF Circuits and Wireless Communication: antennas, RF transceivers
- High-Frequency Applications: microwave, millimeter-wave technologies.
- Resonant Circuits: signal processing, oscillators, and RF filters.

SHAPES AND DIMENSIONS



SS2628:	A= 2.67±0.254	B= 2.67±0.127	D= 2.79±0.127
SS2928:	A= 2.92±0.254	B= 2.67±0.127	D= 2.79±0.127
SS3328:	A= 3.30±0.254	B= 2.67±0.127	D= 2.79±0.127

RECOMMENDED PATTERNS



G=Please refer table	H=3.05 Ref.	I=1.02 Ref.
SS2628: G= 1.27 Ref.		
SS2928: G= 1.52 Ref.		
SS3328: G= 1.77 Ref.		



Square Air Core Inductors - SS2628-SS3328 SERIES



ELECTRONICS SPECIFICATIONS

PART NUMBER	INDUCTANCE (nH)	TEST FREQ. (MHZ)	Q. (Min.)	DCR (mΩ) (Max)	SRF (MHz) (Typ.)	Irms (mA) (Max)
SS2628-27NJ-LF	27±5%	400	200	8.1	2.6	5.5
SS2628-30NJ-LF	30±5%	400	200	8.3	2.4	5.5
SS2928-33NJ-LF	33±5%	400	200	9.5	2.3	4.8
SS2928-36NJ-LF	36±5%	400	200	9.8	2.3	4.8
SS2928-39NJ-LF	39±5%	400	200	10.0	2.2	4.8
SS3328-43NJ-LF	43±5%	400	200	10.8	2.2	4.4
SS3328-47NJ-LF	47±5%	400	200	11.3	2.2	4.4

* Operating temperature range : -40°C to +125°C.

